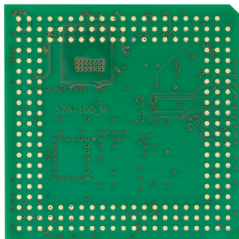
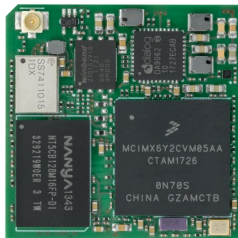
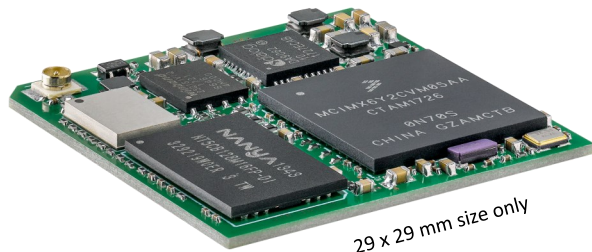


# DHCOR i.MX6UL(L)

## Solderable, cost-effective SOM



**Cortex**  
Intelligent Processors by ARM

### TECHNICAL DETAILS

Processor	ARM Cortex®-A7 up to 900 MHz
Features	Absolute power efficient and cost optimized application processor
Security	Crypto Engine, Secure Boot
DDR3 DRAM	128 / 256 / 512 / 1024 Mbyte
SPI NOR flash	2 Mbyte boot flash
WiFi and Bluetooth	WiFi IEEE802.11b/g/n Bluetooth® v5.1 (BR/EDR/BLE) U.FL antenna connector onboard
Power Management	Dialog PMIC DA9061
Supply	5.0 VDC / typ. 0.5 W
Temperature range	-40 to + 85 °C operating -30 to + 70 °C operating with WiFi and Bluetooth
Dimensions	29.0 x 29.0 x 3.2 mm
BSPs	Linux

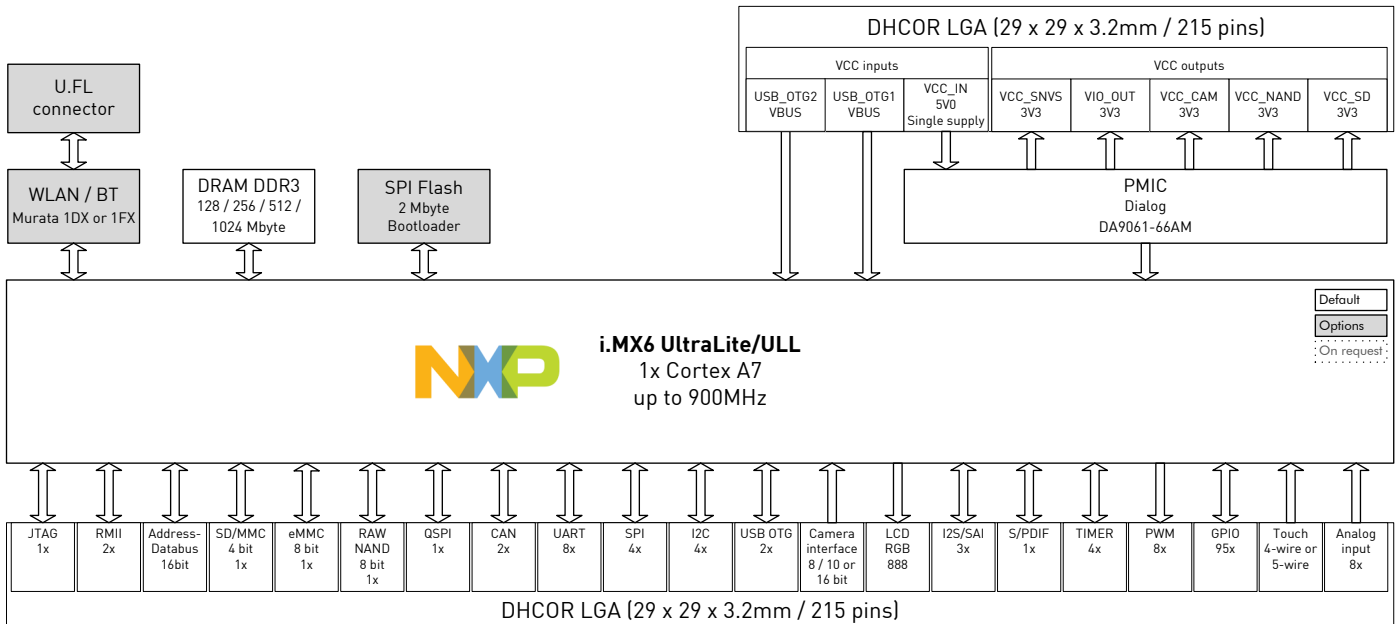
### Available interfaces on LGA (215 pins)

Bus interface	16 bit address / data
Ethernet	2x 10 / 100 Mbit, IEEE 1588
MMC / SD	MMC 4.5 / SD 3.0 / SDIO Port (1-/2-/4-bit)
eMMC	eMMC 4.4 / 4.41
NAND	8-bit interface Raw MLC / SLC
Quad SPI	1x
CAN	2x V2.0B / 1 Mbit/s
UART	8x up to 5.0 Mbit/s
SPI	4x max. 52 Mbps
I2C	4x max. 400 kbit
USB OTG	2x USB 2.0 OTG with PHY
CSI (parallel camera)	1x 8, 10 or 16 bit / pixel data format
Display RGB	Max. 1366 x 768 pixels, 24 bit
Touch	ADC with 4-wire / 5-wire touch controller
S/PDIF	1x
I2S / SAI	3x
GPIOs	95x
PWM / Timer	4x Timer 32 bit, 8x PWM 16 bit
Analog Inputs	8x with 2x 10-bit ADC
Debug interface	JTAG interface

# DHCOR i.MX6UL(L)

## Solderable, cost-effective SOM

### BLOCK DIAGRAM



### ORDERING INFORMATION

#### Ordering Configurations: DHCR-CPU-Cxxx-Rxxx[-SPI][-W/WBT]-X-01LG

CPU	i.MX6ULL (MCIMX6Y2): i.MX6ULL, i.MX6UltraLite (MCIMX6G2): i.MX6UL
Cxxx	528 MHz: C052, 696 MHz: C069, 800 MHz: C080, 900 MHz: C090
Rxxx	128 Mbyte: R012, 256 Mbyte: R025, 512 Mbyte: R051, 1024 Mbyte: R102
X	Commercial temperature range (0 - 70 °C): C, Industrial temperature range (-40 - 85 °C): I (only -30 - 70 °C with option WBT)
01LG	DHCOR Revision, LGA connection

#### Options

[-SPI]	2 Mbyte SPI boot flash
[-W] or [-WBT]	WiFi via Murata 1FX module with U.FL connector: W, WiFi and Bluetooth® via Murata 1DX module with U.FL connector: WBT

#### Item number      Model (other configurations on request)

HI00068      DHCR-iMX6ULL-C090-R051-SPI-C-01LG

HI00070      DHCR-iMX6ULL-C090-R051-SPI-WBT-C-01LG

#### Product description

DHCOR i.MX6ULL 900 MHz, 512 Mbyte DRAM, 2 Mbyte SPI boot flash, commercial temperature range

DHCOR i.MX6ULL 900 MHz, 512 Mbyte DRAM, 2 Mbyte SPI boot flash, Murata 1DX WiFi and Bluetooth® module, commercial temperature range