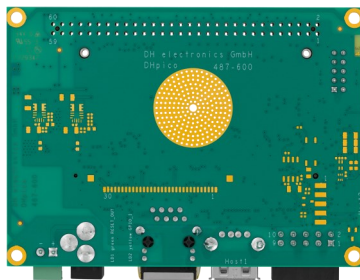
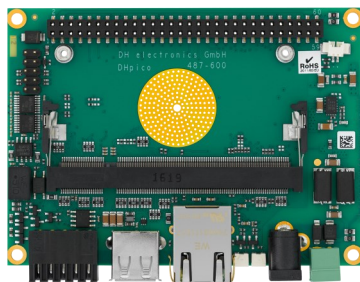
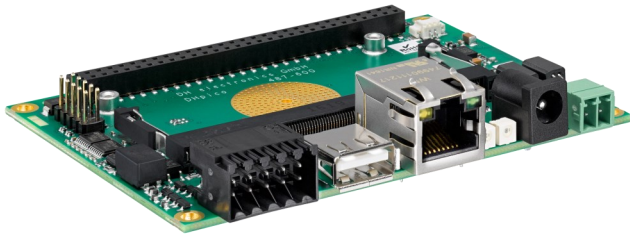


DH picoTX2

Baseboard



TECHNICAL DETAILS

Processor module

SODIMM-200	DHCOM standard compliant
BSPs	Linux, Android, Windows CE

Interfaces

Ethernet	10 / 100 Mbit
USB	1x Host 2.0 1x OTG 2.0
Serial	1x RS232 (Rx / Tx / Rts / Cts) 1x RS232 (Rx / Tx / Rts / Cts) or RS485 1x UART (Rx / Tx)
CAN	1x CAN (up to 1Mbaud) or CAN (without Transceiver)
I2C	1
SPI	1x 1 Chip Select

Multimedia

Display	1x RGB, 24 bit On request: 1x single channel LVDS, 24 bit (with display and backlight supply)
Touch	4-wire resistive

IO

PWM	1x 16 bit
GPIOs	4 IOs
Inputs	1x Opto-coupler (optional additional Input alt. to CAN)
Outputs	1x Open Collector (optional additional Output alt. to CAN)

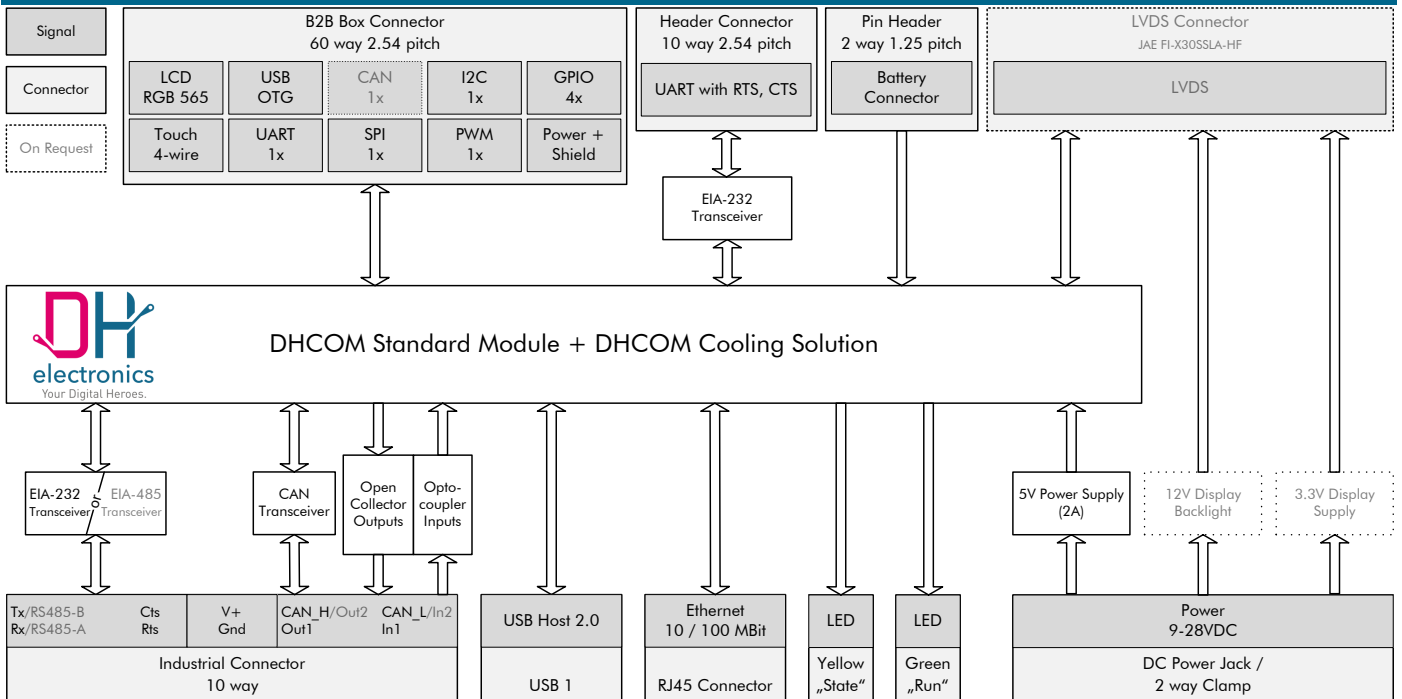
LEDs

Run	Green
Status	Yellow (software controlled)

Physical

Power supply	9 to 28 VDC
Battery	Connector for CR2032
Cooling	DH 5-Cent Cooling Solution
Temperature range	Operating: -40 to +85 °C
Dimensions	100 x 72 x 18 mm

BLOCK DIAGRAM



ORDERING INFORMATION

Ordering Configurations: DHEC-PITX-DHCM-RSxxx-xxx[-LVDS]-02PI

RS232 or RS485	RS232 on 10 way industrial connector: RS232, RS485 on 10 way industrial connector: RS485
CAN or IO2	CAN High/Low on 10 way industrial connector: CAN, Second Input and Output on 10 way industrial connector: IO2 Note: With IO2 configuration, CAN Tx/Rx interface is available on B2B connector.
02PI	DH picoITX Revision 02, SODIMM200 socket and DHCOM cooling solution

Options

[-LVDS]	Single channel LVDS interface and supply available on JAE connector: LVDS
---------	---

Item number

HP000015

Model [other configurations on request]

DHEC-PITX-DHCM-RS232-CAN-02PI

Product description

picoITX base board for DHCOM standard modules with RS232 and CAN on 10 way industrial connector.