



# Usermanual

DHMI Webbrowser and Configurationwebserver

DH electronics GmbH ▪ Am Anger 8 ▪ 83346 Bergen ▪ Germany

IDEA TECHNOLOGY SOLUTION

**History**

<b>Revision</b>	<b>Date</b>	<b>Description and Changes</b>	<b>Name</b>
R01	20.12.2018	Initial Release	FG
R01	20.12.2018	Release	SG

---

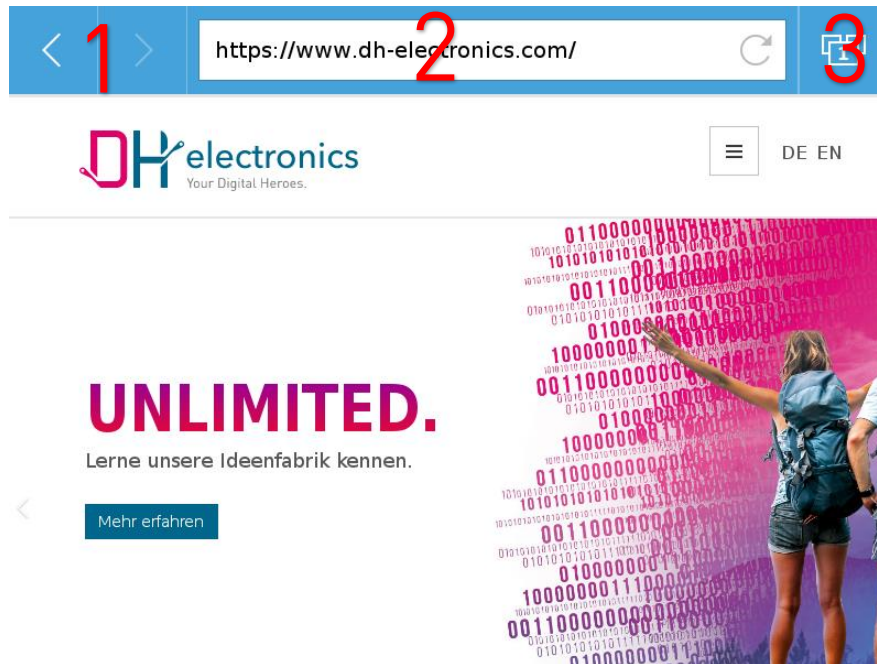
# Table of contents

1	Web browser .....	4
1.1	Default view .....	4
1.2	Tab view.....	4
1.3	Kiosk mode .....	5
1.4	Controls.....	6
2	Configuration Webserver .....	6
2.1	Access.....	6
2.2	Login .....	7
2.3	Home.....	8
2.4	Password .....	8
2.5	System Status .....	9
2.6	Network Settings.....	9
2.6.1	IP Configuration.....	9
2.6.2	Hostname .....	10
2.7	Webbrowser Settings.....	11

# 1 Web browser

## 1.1 Default view

The web browser can be used to configure the dhmi with the configuration webserver or to display any website.



The web browser has a navigation bar which can be hidden for a full screen mode over the configuration webserver.

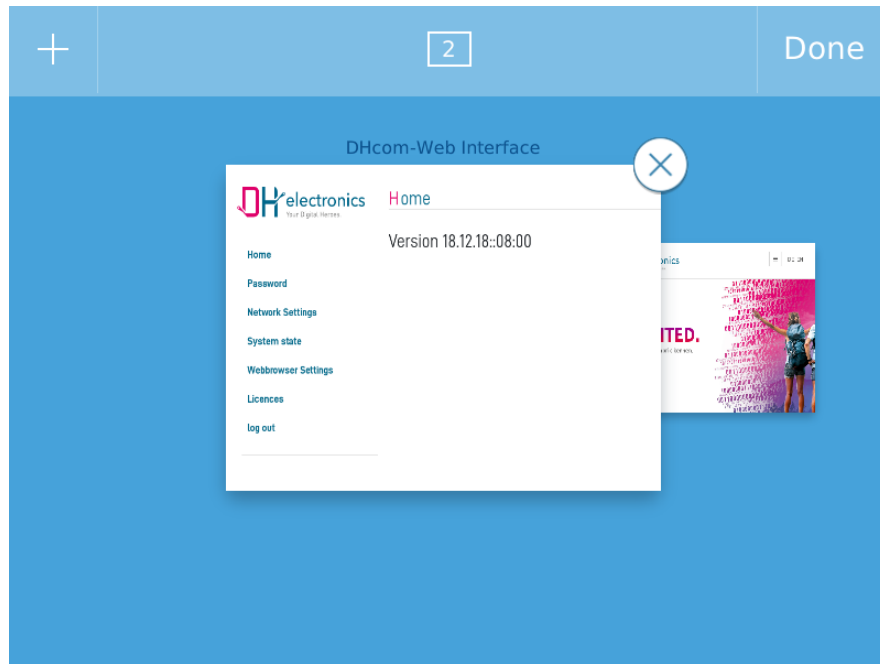
The navigation bar consists of different controls:

1. Backward and forward button for navigation between the sites
2. Address bar
3. Tab view

## 1.2 Tab view

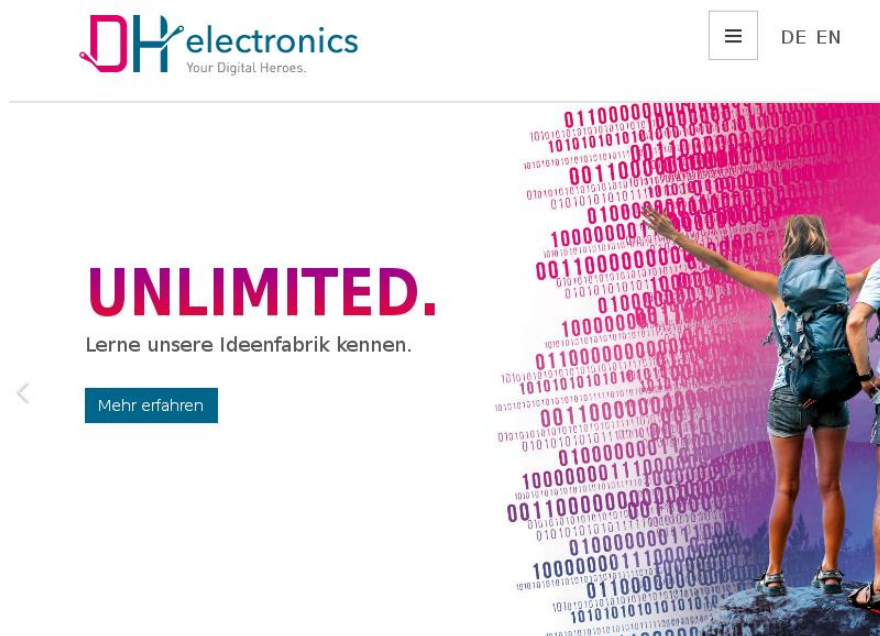
A click on the tab view shows an overview of the actual opened tabs. There can only be 10 tabs open at the same time. The amount of open tabs can have an influence on the overall performance of the system. The tab view is not available in the kiosk mode.

The navigation through the tab view is done with a wiping gesture. With a touch tap on the tab miniature the tab gets opened. Tabs can be closed in the tab view with a tap on the cross sign on the right of the miniature.



### 1.3 Kiosk mode

The kiosk mode can be activated from the configuration webserver menu “Webbrowser Settings” (chapter 2.7). The kiosk mode hides the navigation bar and shows the website in full screen.



## 1.4 Controls

The web browser can be controlled with the touch screen. The following touch gestures are available:

- Touch Tap  
Performs an action (e.g. activate a button)
- Pull/Scroll  
Pull for moving website elements from the outside of the display into the focus
- Tap and hold  
Opens a context menu. With the context menu it is possible to navigate through or reload the website, although the web browser is used in kiosk mode (without navigation bar)



The web browser has a built in virtual keyboard which gets open when an interactive textbox control gets focus. At this time it is not possible to control the web browser with a mouse or keyboard.

## 2 Configuration Webserver

### 2.1 Access

After startup of the dhmi, the web browser opens the website of the configuration webserver.

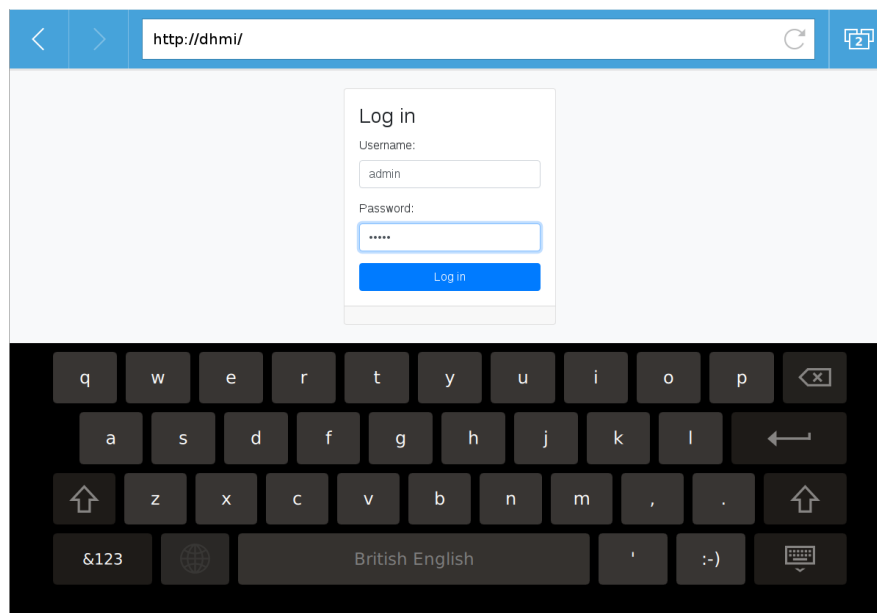
Alternatively the configuration webserver can be reached from other devices as follows:

- over the static alias IP 192.168.178.101
- over the dynamically assigned IP from an dhcp server
- over a statically assigned IP

The configuration webserver is always accessible over the hostname "dhmi" and the web browser on the dhmi device.



## 2.2 Login



After startup of the dhmi device the default website that gets shown is the login screen.

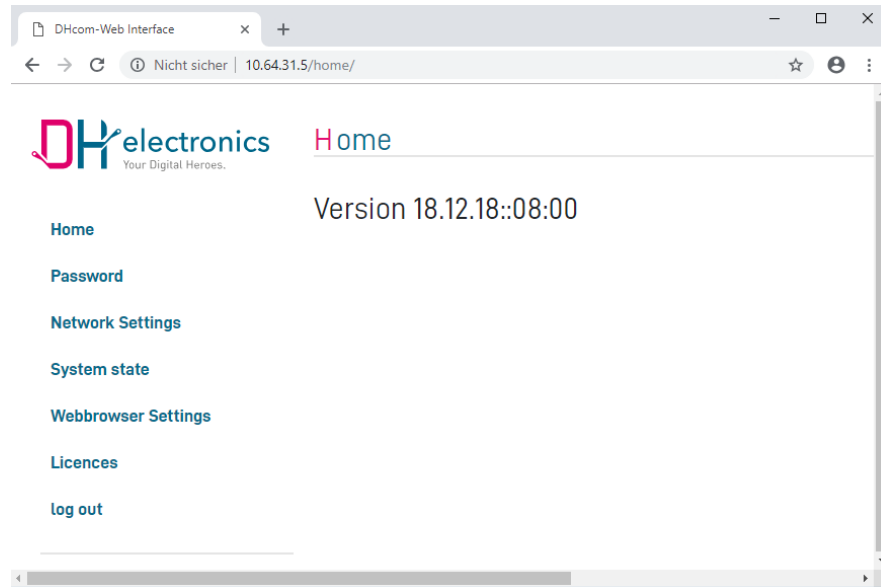
The standard user is:

Username: admin

Password: admin

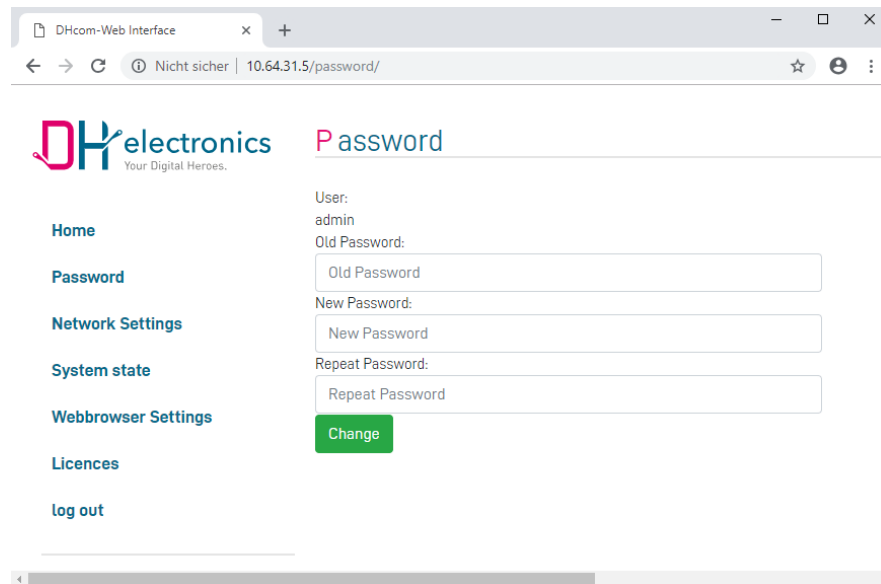
The password should be changed after the first startup for security reasons.

## 2.3 Home



The "Home" website shows the actual software version.

## 2.4 Password



Under the "Password" option one can change the standard password.

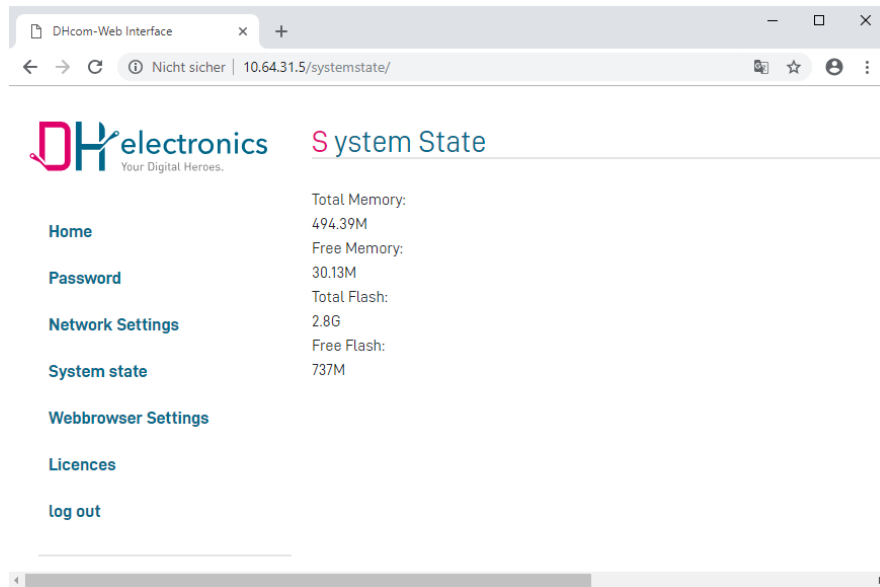
The standard user is:

Username: admin

Password: admin



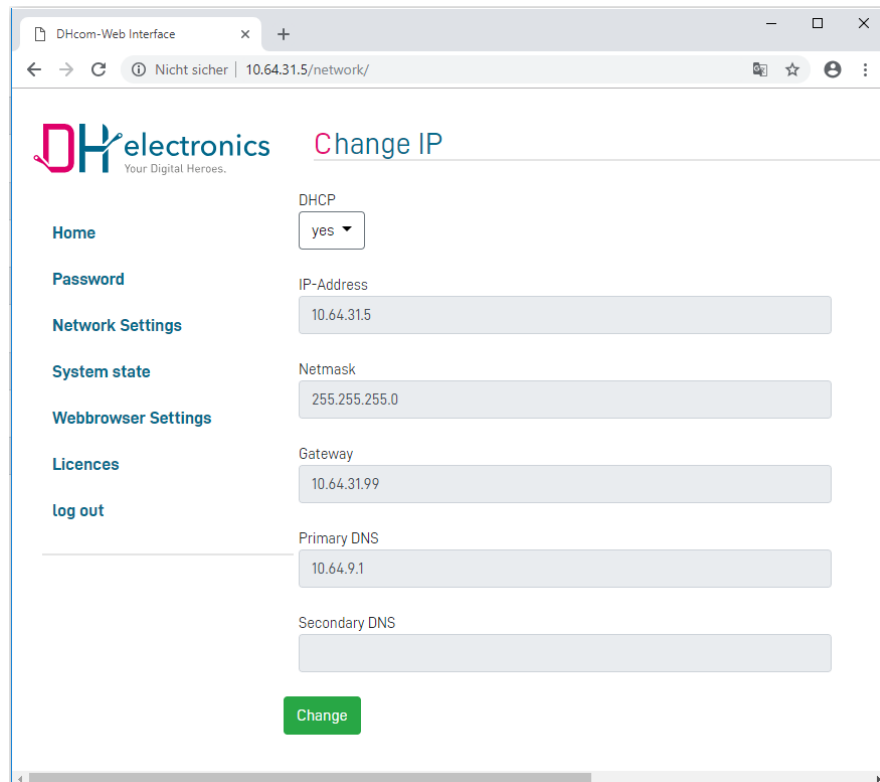
## 2.5 System State



Under the "system state" option the free memory of the dhmi device can be queried.

## 2.6 Network Settings

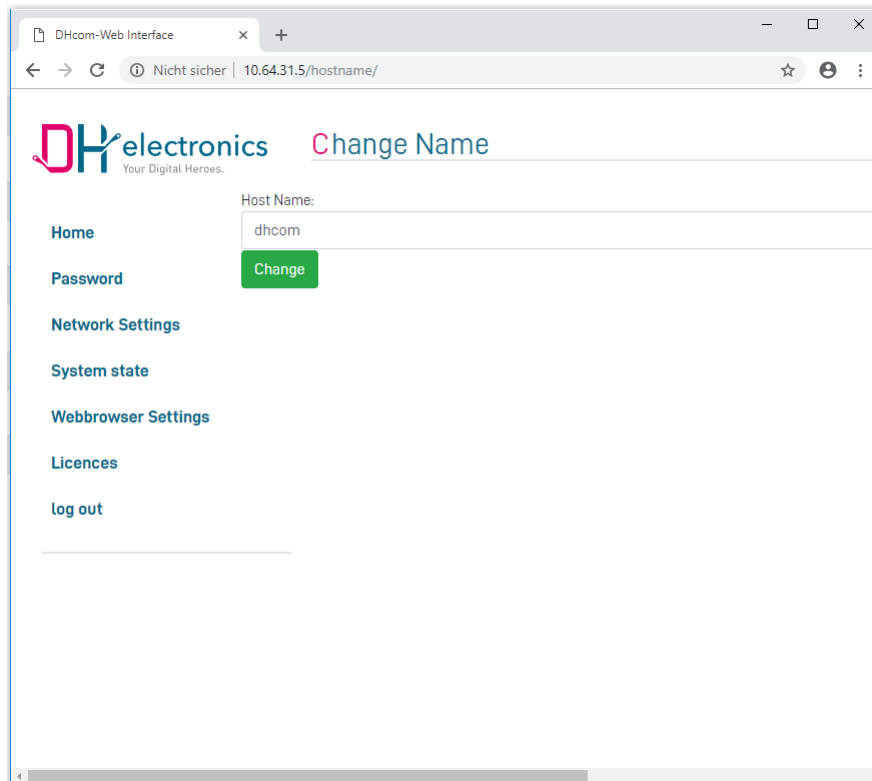
### 2.6.1 IP Configuration



Under the “IP configuration” option, the network settings of the dhmi device can be changed. As default the dhmi get his network settings from a dhcp server. If the dhcp option is enabled the textboxes for configuring a static Ip are disabled. A tap on “Change” button save the settings.

Also if the dhcp option is activated one can still access the device over the static alias IP 192.168.178.101.

## 2.6.2 Hostname

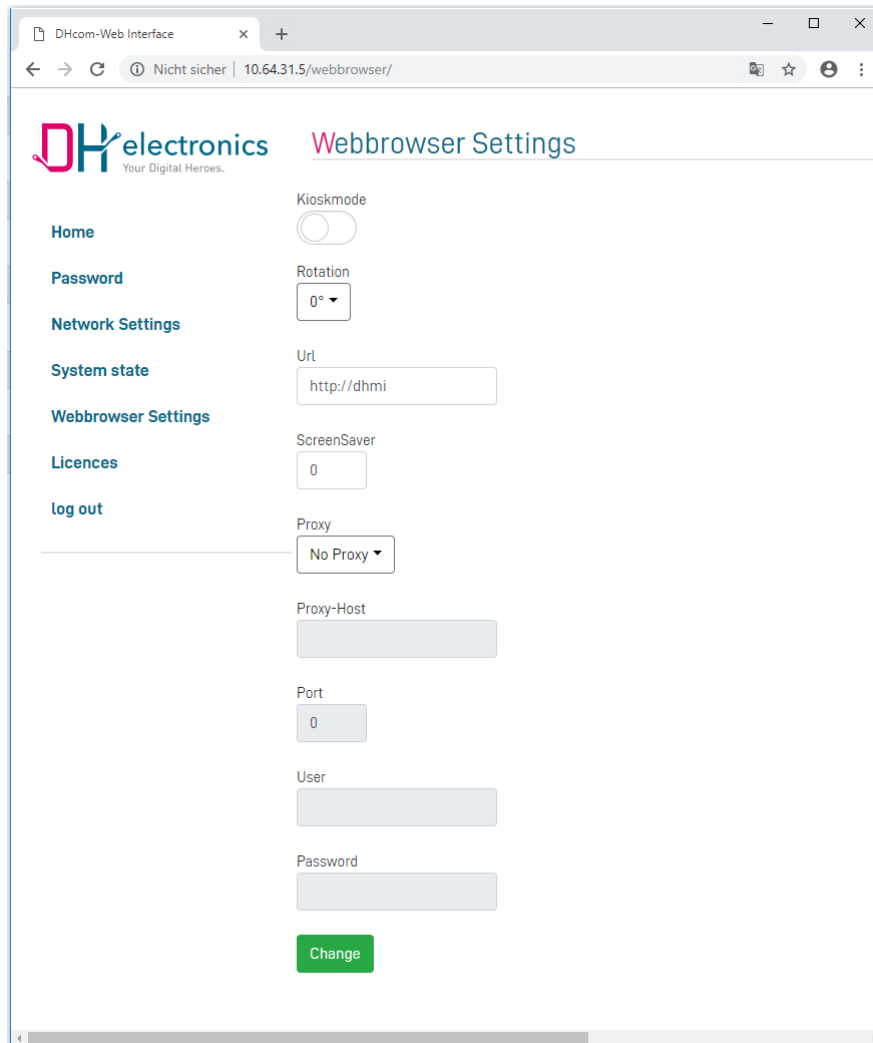


Under the „Name“ option the hostname of the system can be changed. The hostname can be used to distinguish between different dhmi devices.

The configuration webserver can be also accessed through the web browser on the dhmi by the hostname. For example a device with the hostname “dhmi” can be accessed by typing “dhmi” into the address bar of the browser on the dhmi device:



## 2.7 Webbrowser Settings



Under the “Webbrowser Settings” option the web browser on the dhmi device can be configured:

- **Kiosk mode:**  
With the toggle switch the kiosk mode can be activated or deactivated.  
If the the kiosk mode has been activated, the browser gets displayed without navigation bar in full screen.
- **Rotation:**  
This is the configuration of the rotation of the webbrowser on the display.
- **Url:**  
This is the default webpage which gets displayed after startup of the device.

It is necessary to add the protocol prefix to the url (e.g. "http://www.google.de" and not "google.de" or "www.google.de")

- ScreenSaver:

This is the option to configure the screen saver activation time in minutes. A Tap on the display reactivates the display. A configured 0 deactivates the screensaver.

- Proxy:

This is the option to configure a proxy server if this is necessary for internet access.

All settings only gets active after tapping the "Change" button.